



AVON | WEST  
STRATFORD  
TOWNHOMES

# Model C

Square Footage: 1,679

Bedrooms: 3

Bathrooms: 2.5

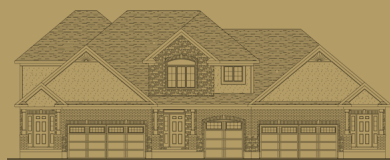
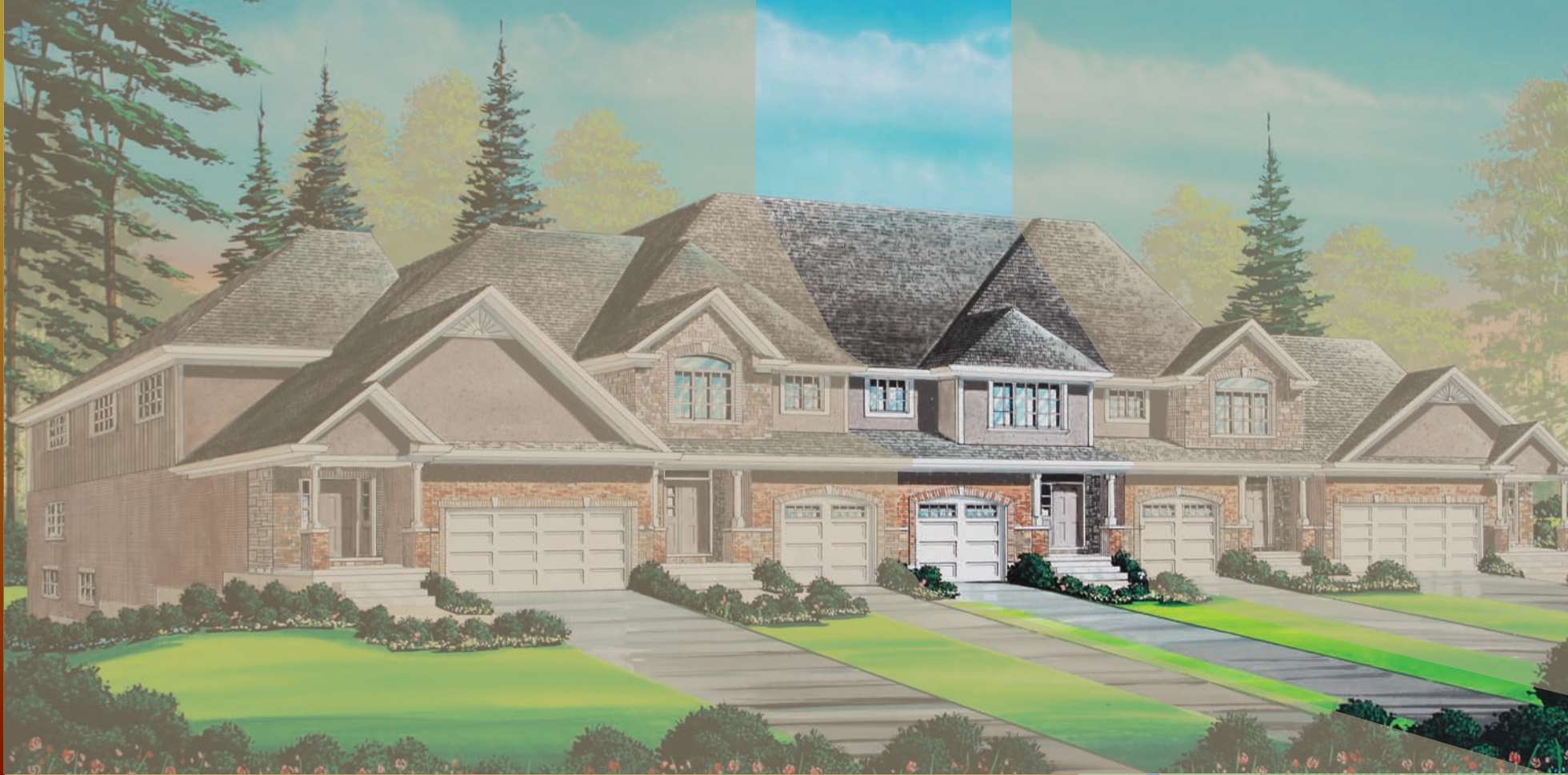
Storeys: 2

3 Bedroom, 2 storey, master with ensuite and walk-in closet, 2 1/2 baths, second floor laundry, single car garage.

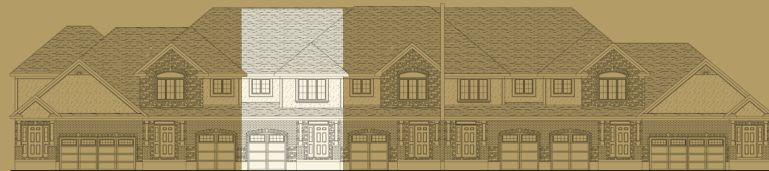


**Bromberg  
Homes**

Division of Werner Bromberg Ltd.



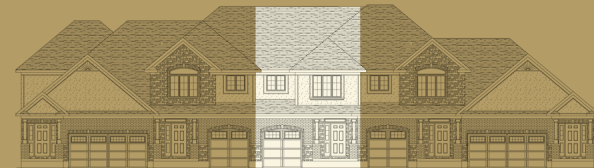
Model C - 3 Block



Model C - 7 Block



Model C - 4 Block



Model C - 5 Block





AVON | WEST  
STRATFORD  
TOWNHOMES  
Model C

Square Footage: 1,679

Bedrooms: 3

Bathrooms: 2.5

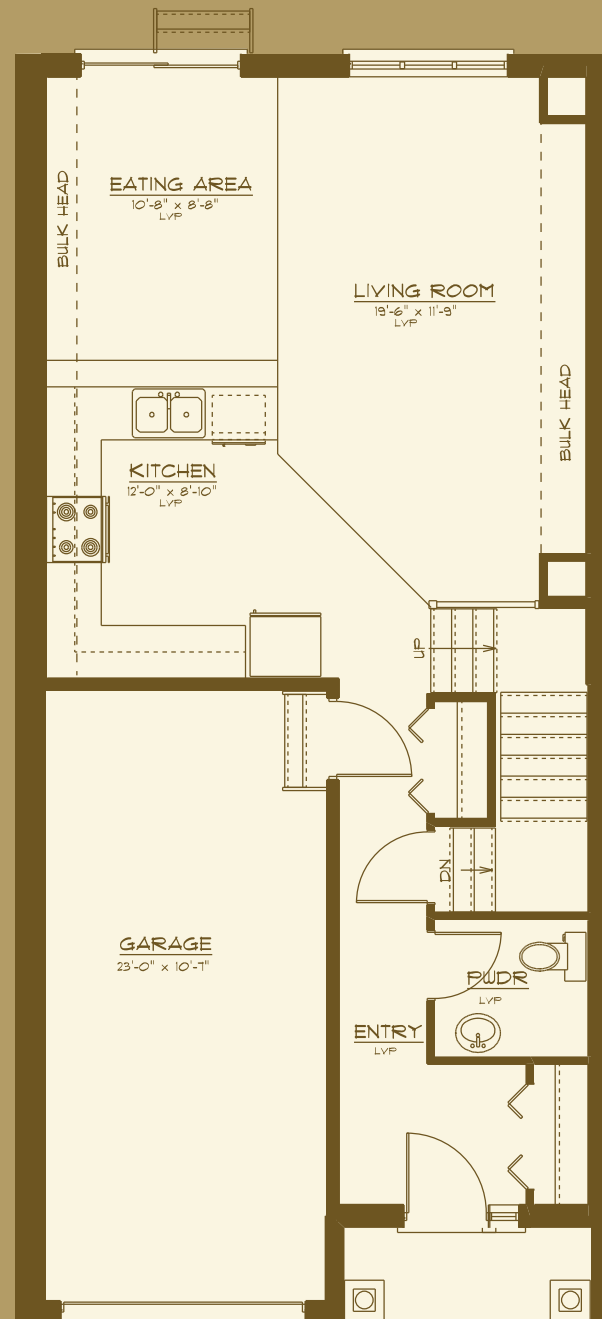
Storeys: 2

3 Bedroom, 2 storey, master with ensuite and walk-in closet, 2 1/2 baths, second floor laundry, single car garage.

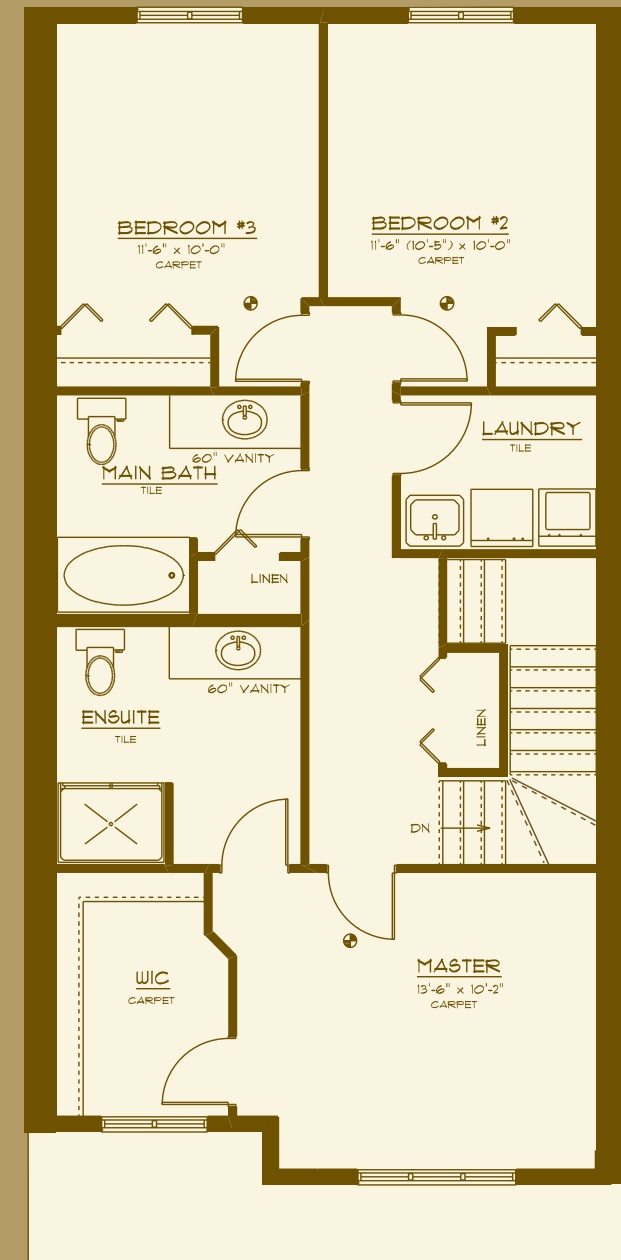


**Bromberg  
Homes**

Division of Werner Bromberg Ltd.



Model C - MAIN FLOOR 739 sq. ft.



Model C - UPPER FLOOR 940 sq. ft.